

Evolute GmbH is a high-tech company, founded in February 2008 as a spin-off from the research group of Prof. H. Pottmann at Vienna University of Technology. The foundation of the company is motivated by a strong need for geometric computing expertise in modern architecture. This need results from one of the most striking trends in contemporary architecture, namely designs based on complex freeform structures. In order to better exploit the potential of the developed technologies, Evolute is also performing research and consulting on manufacturing technologies which are related to those used in architecture.



**Contact:**

email: [office@evolute.at](mailto:office@evolute.at)  
<http://www.evolute.at>  
fax: +43 1 8697662

**Vienna Research Center:**

Evolute GmbH  
Schwindgasse 4/10  
1040 Wien  
Austria

**Registered Office:**

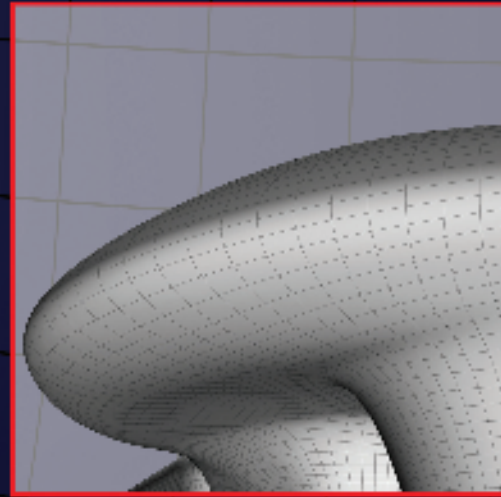
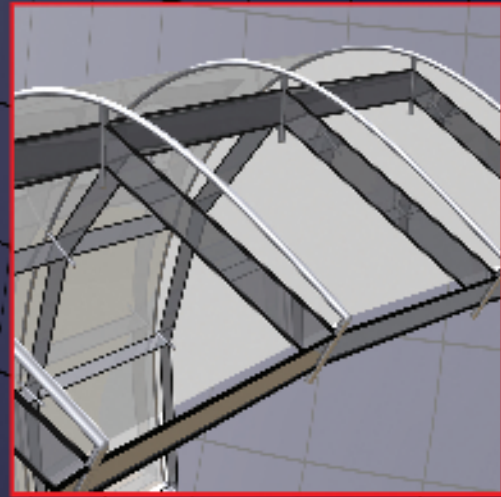
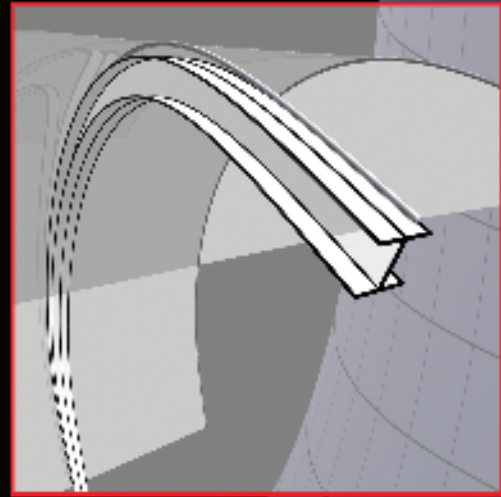
Evolute GmbH  
Sonnbergstraße 101/8  
2380 Perchtoldsdorf  
Austria

registration number: 306073h  
registration authority: Landesgericht Wiener Neustadt

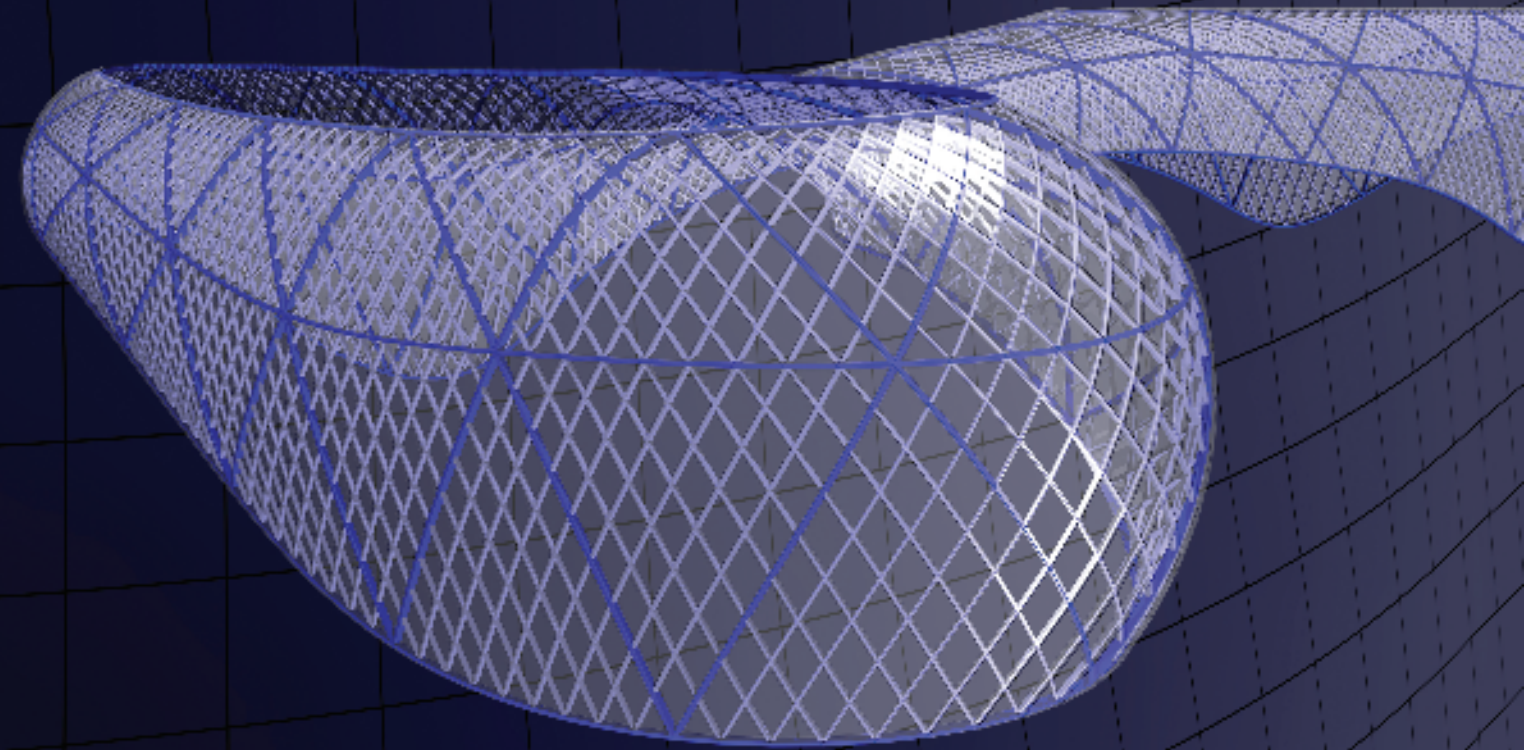
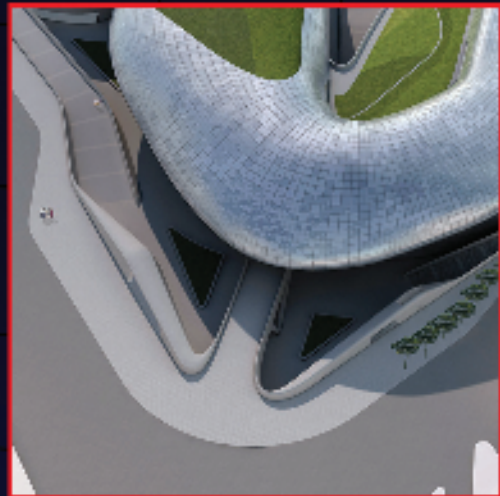
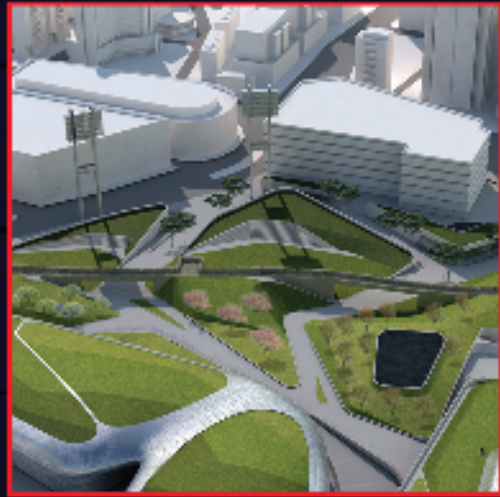
**We may be involved in any step of the design and production process**

Evolute works with architects, engineers and construction companies. Our services include

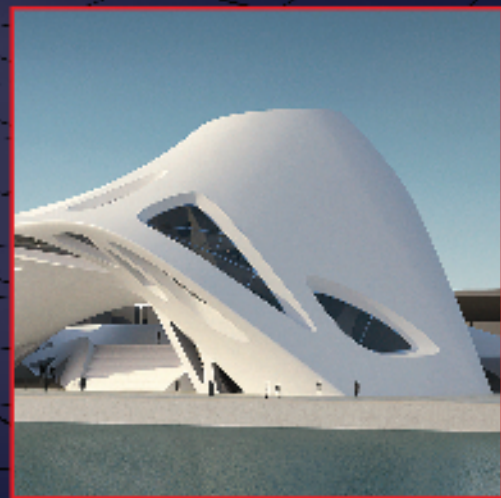
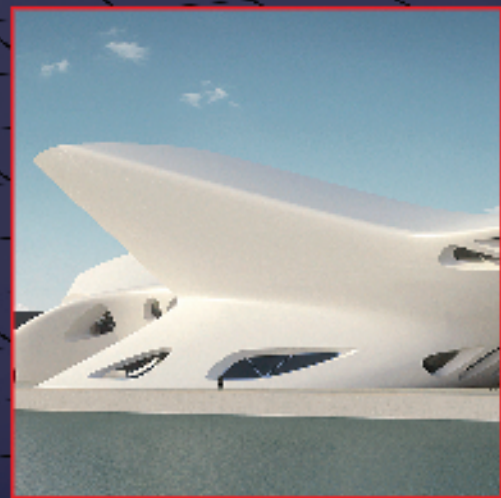
- production-aware design tools
- rationalization, layout of panels and sub-structure, related engineering tasks
- production optimization
- quality control (3D measurement and analysis of manufacturing precision)



**We master geometric complexity in architecture**



**Optimization and layout of substructure.** Our software tools and optimization procedures are fully customizable and adaptable to any geometric problem definition. Thus we are able to streamline processes related to design, rationalization, detailed planning, production and quality control. We are not bound to specific CAD software.



**We make the luxury of freeform architecture affordable**

**Rationalization of a design.** We compute a 3D model which minimally deviates from the original design, but can be manufactured with the technology of your choice at greatly reduced cost.

**Panel layout and optimization.** We have developed software for optimized segmentation of a freeform design into panels, considering various constraints on aesthetics, materials, structural requirements, manufacturing technologies and cost.

**References**

Our clients and research project partners include:

- fibreC Austria GmbH, Hochfilzen
- Fraunhofer Institute for Production Technology, Aachen, Germany
- ModuleWorks GmbH, Aachen, Germany
- Redesco Progetti Srl, Milano
- RFR, Paris
- RoboFold Ltd., London
- Waagner Biro Stahlbau AG, Vienna
- Zaha Hadid Architects, London

